



The Bolt High-Speed Cinebot is the fastest of its kind – capturing images in crisp focus that would be impossible by hand or any other method. Whether shooting commercials, tabletop work, film or television, the Bolt adds an entirely new perspective to filming.

## OPERATING ENVELOPE

<b>Maximum Height</b>	3.5m / 11'5"
<b>Lowest Position</b>	0m / 0'
<b>Maximum reach (from rotate centre)</b>	2.0m / 6'6"

## RIG PERFORMANCE

<b>Track</b>	Unlimited range of travel @ 4.5m/s
<b>Rotate</b>	+/- 160° range of travel @ 240°/s
<b>Lift</b>	+/- 137" range of travel @ 240°/s
<b>Arm</b>	+/- 150° range of travel @ 300°/s
<b>Pan</b>	+/- 270° range of travel @ 350°/s
<b>Tilt</b>	+/- 120° / -105° range of travel @ 350°/s
<b>Roll</b>	+/- 270° range of travel @ 870°/s

## PRACTICAL SHOOTING SPEEDS

<b>Vertical</b>	1m (3'3") vertical movement / 0.5s
<b>Horizontal</b>	1m (3'3") horizontal movement / 0.5s
<b>Arc</b>	Complete 180° arc with 75cm (2'5") radius / 1.5s
	Complete 180° arc with 45cm (2'5") radius / 1s

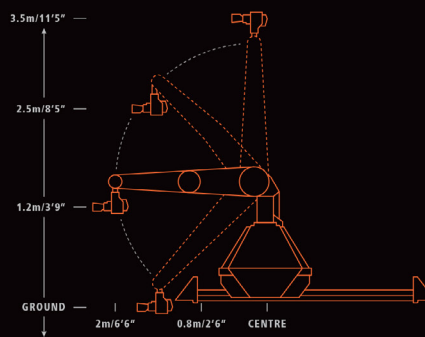
## RIG WEIGHTS

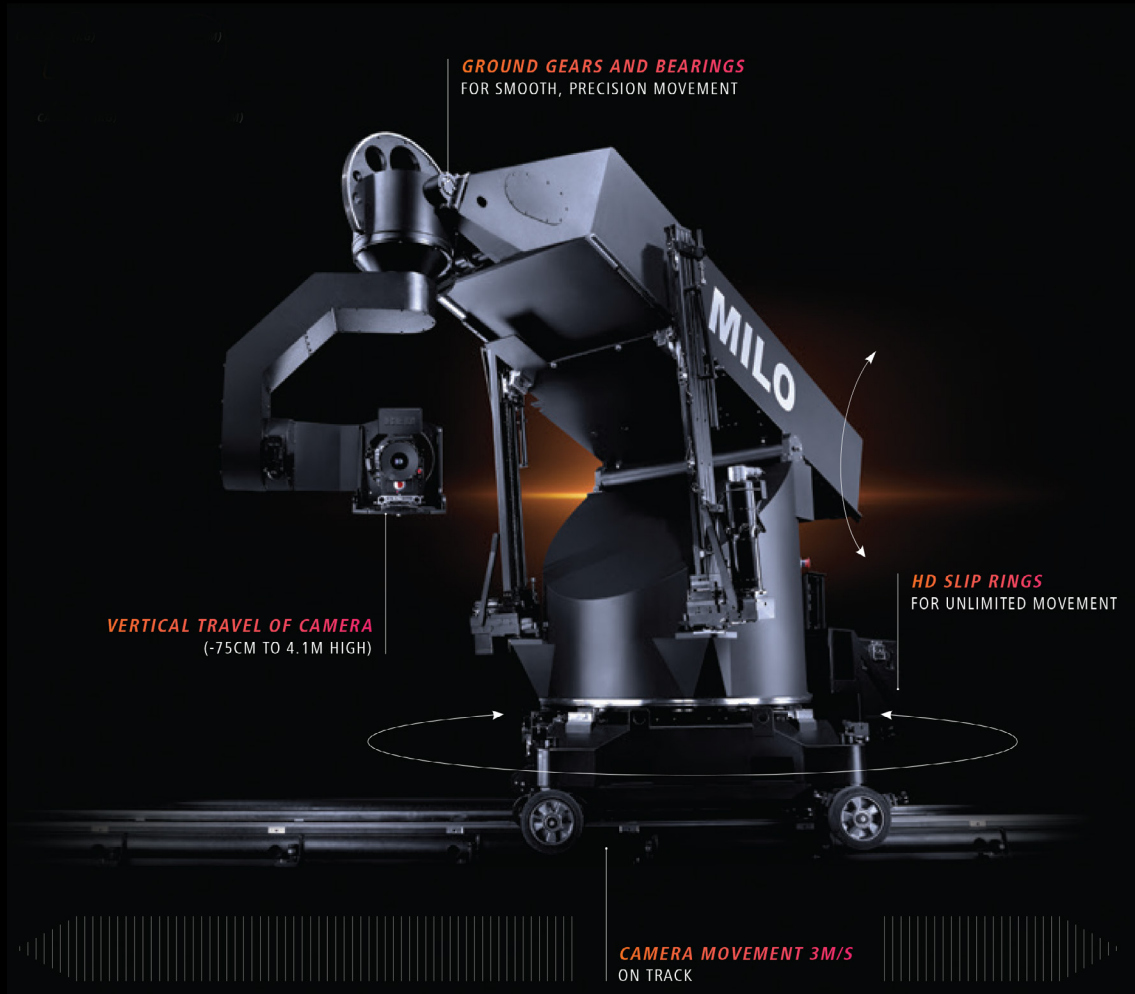
<b>Bolt Rig</b>	600kg / 1323lbs
<b>Maximum camera payload</b>	20kg / 44lbs

Note: counter weights may be required depending on the shot and length of track

## POWER CONNECTION

<b>Power requirements</b>	3x 400 volts, 32 amps, 50-60Hz
<b>Generator</b>	3k VA (Bolt) 14k VA (Bolt on track)





**GROUND GEARS AND BEARINGS**  
FOR SMOOTH, PRECISION MOVEMENT

**VERTICAL TRAVEL OF CAMERA**  
(-75CM TO 4.1M HIGH)

**HD SLIP RINGS**  
FOR UNLIMITED MOVEMENT

**CAMERA MOVEMENT 3M/S**  
ON TRACK

The Academy Award winning Milo is the industry standard for precision camera movement. A frame accurate, high precision rig, perfect for macro, tabletop or CGI work.

## RIG PERFORMANCE

<b>Track</b>	As required @ 2m/s
<b>Rotate</b>	Unlimited range of travel @ 38°/s
<b>Lift</b>	+/- 45° range of travel @ 24°/s
<b>Arm Extend</b>	1 metre @ 38cm/s
<b>Outer Arm</b>	225° range of travel @ 40°/s
<b>Pan</b>	Unlimited range of travel @ 120°/s
<b>Tilt</b>	290° range of travel @ 120°/s
<b>Roll</b>	Unlimited range of travel @ 120°/s

## RIG WEIGHTS

<b>Base</b>	166kg / 365lbs
<b>Turret</b>	160kg / 352lbs
<b>Main Arm</b>	130kg / 286lbs
<b>Head with Outer Arm</b>	63kg / 139lbs
<b>Extend Ballscrew</b>	28kg / 62lbs
<b>Lift Ballscrews</b>	39kg / 86lbs
<b>Power Supply &amp; Driver Unit</b>	124kg / 273lbs
Optional	
<b>Long Arm (with counter weights)</b>	452kg / 995lbs

## OPERATING ENVELOPE

<b>Maximum Height</b>	4.1m / 13'5"
<b>Lowest Position</b>	-0.75m / -2'5"
<b>Maximum Height (Long Arm)</b>	6m / 19'6"
<b>Lowest Position (Long Arm)</b>	-2.75m / -9'0"

## POWER CONNECTION

<b>Power requirements</b>	110-240 volts, frequency 50-60Hz
<b>Generator</b>	6.5k VA (Milo & 8 Model Movers)

